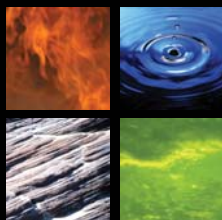




# TRACCESS CI



 **TTG Systems**

The Competency Intelligence Leader



## TRACCESS CI

TRACCESS CI formerly known as v8 of the TRACCESS PERFORM module has more features and flexibility than its predecessor. An evolution of years of customer feedback and research, TRACCESS CI not only has a fresher look and feel, it marks a new generation of competency-based learning applications specifically targeting your employee training needs.

TRACCESS CI continues to be an integral component for any training system that focuses on front line workers in an operational environment. Like its predecessor, TRACCESS PERFORM, TRACCESS CI enables organizations to organize, manage, measure, and report all aspects of employee competency, compliance, and learning. TRACCESS CI supports the delivery of personal competency plans, learning guides, self-paced or instructor-led material or learning modules, job aids (procedures, drawings, checklists, etc.), records of achievement, and notifications of change.

Not only does it address the same features and benefits as TRACCESS PERFORM such as providing a structured training framework for skill and competency management; centralized administration; change management; real-time reporting, TRACCESS CI has more features and benefits.



TRACCESS CI System Owner View

## Role-based Functionality

TRACCESS CI's power is in its role-based functionality. TRACCESS CI users are no longer limited to one role within the system. Employees can have multiple roles ranging from Learner, Supervisor, Administrator, Reporter and Subject Matter Expert. These roles can be assigned to Employees at various areas such as different Organization Units or Processes, allowing you to limit or tailor permissions per user. And, to increase efficiency and flexibility, TRACCESS CI has integrated its features into one window, where your role within the system dictates what you have access to.

- Allows employees to be both a Learner in one Organization Unit and a Supervisor and/ or a Reporter in another unit
- Provides increased flexibility for an organization in mirroring its organizational processes and employee roles

## Inherited Learning Structure

TRACCESS data structures are now hierarchical in nature which means you can

- Apply learning at the top of the organization and it will cascade down to all related fields
- Apply any learning further down the Organization tree structure and only those below in the tree will be effected (i.e. you can nest learning processes within other common learning processes as well as Organization Units within other Organization Units



## Bookmarks

TRACCESS CI now has Bookmarks enabling a user to save a place in the application.

- Allows Learners to create Bookmarks to any location in a tree, resource or even individual assessment questions
- Enables SMEs to bookmark places when building learning structures

## Multilingual Data

This is a powerful new TRACCESS CI feature. TRACCESS CI now allows multiple languages to be applied to data in an implementation.

- Allows your Employees to access their learning in any language they prefer and they will not lose any of the synchronization of data or reporting features
- Allows your Administrators to tailor Task resources and assessments based on the language needs of a site, yet continue to track and report on that Task at the Corporate level

## Capability Assessments

One of the benefits of TRACCESS CI is the tracking and compliance protection that it offers. Now, with the addition of Capability Assessments, we have increased your corporate safety-net.

- Allows your SMEs to author standardized performance criteria in the form of Capability Assessments that can then be observed by an Expert
- Transfers ownership of competence evaluations to the Corporation

## SCORM Engine

TRACCESS CI is integrated with the world's leading Rustici SCORM Engine and allows you to import, deliver and track SCORM modules at the Task level.

- Conforms to the standards of SCORM 1.2 and SCORM 2004

## Prerequisites

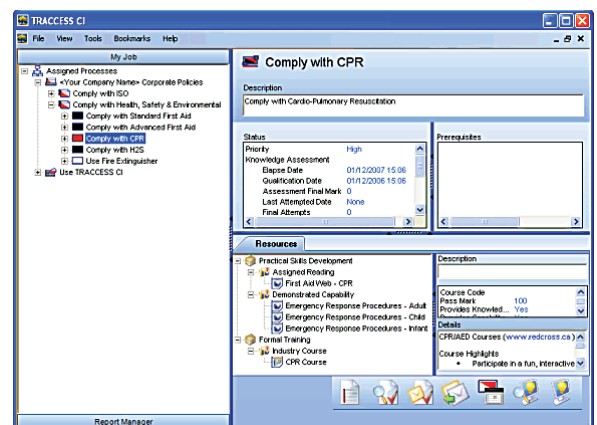
TRACCESS CI now supports prerequisites.

- Allows the organization to use prerequisites when you require Learners to complete a Task before subsequent Tasks can be attempted

## Events

If you are an Administrator in the TRACCESS CI system, you may want to create and monitor certain events, such as running reports or sending email.

- Allows you to create event triggers such as sending automated notifications to employees and their manager when a Task is about to elapse
- Enables you to create events like generating reports at scheduled times



TRACCESS CI Learner View

## The TRACCESS CI Product Family

The TRACCESS CI modules integrate seamlessly with the TRACCESS CI base to give you the additional and tailored functionality you require.



An assessment creation tool for testing knowledge transfer and on-the-job capability



A comprehensive authoring system for creating learning resources



A topical resource reference library and high speed retrieval system.

[www.ttg-inc.com](http://www.ttg-inc.com)

Suite 200, 12310 - 105 Avenue  
Edmonton, Alberta  
T5N 0Y4 Canada

Tel: 780.462.6365  
Fax: 780.450.0186

Toll: 800.762.1355

[info@ttg-inc.com](mailto:info@ttg-inc.com)

